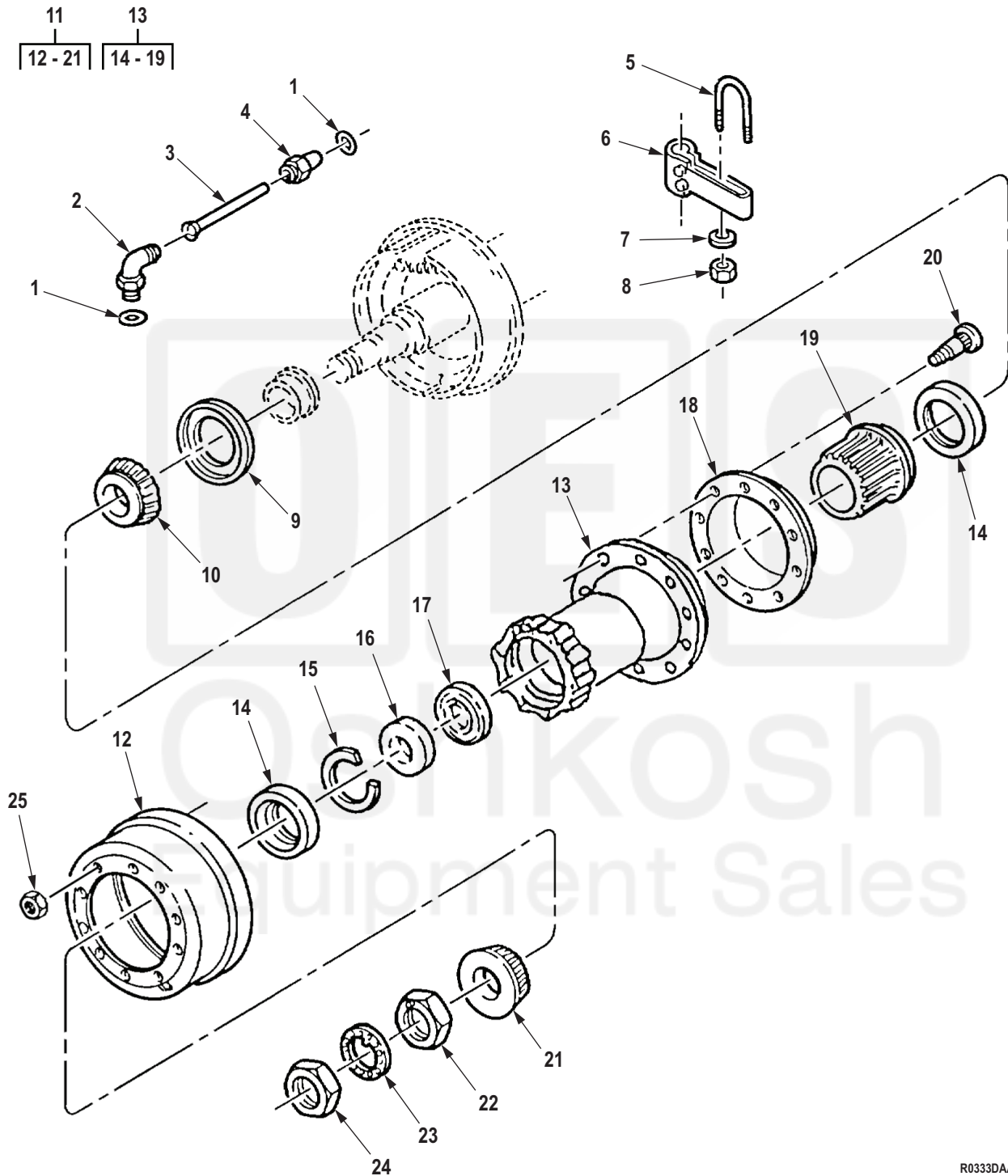


R0331DAA

Figure 314. Front Wheel Hub and Drum Assembly (M939A2)

(1) ITEM NO.	(2) SMR CODE	(3) NSN	(4) CAGEC	(5) PART NUMBER	(6) DESCRIPTION AND USABLE ON CODE (UOC)	(7) QTY
GROUP 1311 WHEEL ASSEMBLY.						
FIG. 314. FRONT WHEEL HUB AND DRUM ASSEMBLY (M939A2)						
1	PAFZZ	2530-01-271-9809	78500	A-3270-R-1032	FLANGE,DRIVE AXLE UOC: ZAA,ZAB,ZAC,ZAD,ZAE,ZAF, ZAG,ZAH,ZAJ,ZAL	2
2	PAFZZ	5310-01-270-8425	78500	1227-E-1357	NUT,PLAIN,OCTAGON UOC: ZAA,ZAB,ZAC,ZAD,ZAE,ZAF, ZAG,ZAH,ZAJ,ZAL	2
3	PAFZZ	5310-00-321-9974	3D6E9	R002304	WASHER,KEY WHEEL BEARING LOCK UOC: ZAA,ZAB,ZAC,ZAD,ZAE,ZAF, ZAG,ZAH,ZAJ,ZAL	2
4	PAFZZ	5310-01-271-2467	78500	1227-D-1356	NUT,PLAIN,OCTAGON UOC: ZAA,ZAB,ZAC,ZAD,ZAE,ZAF, ZAG,ZAH,ZAJ,ZAL	2
5	PAFZZ	2530-01-284-2310	78500	A3333X3534	HUB,WHEEL,VEHICULAR ASSEMBLY,LEFT HAND UOC: ZAA,ZAB,ZAC,ZAD,ZAE,ZAF, ZAG,ZAH,ZAJ,ZAL	1
5	PAFZZ	2530-01-282-8619	78500	A2-333-X-3534	BRAKE DRUM ASSEMBLY,RIGHT HAND UOC: ZAA,ZAB,ZAC,ZAD,ZAE,ZAF, ZAG,ZAH,ZAJ,ZAL	1
6	PAFZZ	5306-01-271-5843	78500	20X-1816-Z	. BOLT,RIBBED SHOULDE RIGHT SIDE UOC: ZAA,ZAB,ZAC,ZAD,ZAE,ZAF, ZAG,ZAH,ZAJ,ZAL	10
6	PAFZZ	5306-01-271-5842	78500	20X-1815-Z	. BOLT,RIBBED SHOULDE LEFT SIDE UOC: ZAA,ZAB,ZAC,ZAD,ZAE,ZAF, ZAG,ZAH,ZAJ,ZAL	10
7	PAFZZ	5330-01-271-9410	01212	4591SCR	. SEAL,PLAIN ENCASED UOC: ZAA,ZAB,ZAC,ZAD,ZAE,ZAF, ZAG,ZAH,ZAJ,ZAL	2
8	PAFZZ	2530-01-271-8023	78500	3219S4829	. BRAKE DRUM UOC: ZAA,ZAB,ZAC,ZAD,ZAE,ZAF, ZAG,ZAH,ZAJ,ZAL	1
9	PAFZZ	2530-01-284-4399	78500	A-333-X-3534	. HUB,WHEEL,VEHICULAR UOC: ZAA,ZAB,ZAC,ZAD,ZAE,ZAF, ZAG,ZAH,ZAJ,ZAL	1
10	PAFZZ	5305-01-271-6450	78500	2206-W-1011	. . SCREW,CAP,HEXAGON H UOC: ZAA,ZAB,ZAC,ZAD,ZAE,ZAF, ZAG,ZAH,ZAJ,ZAL	1
11	PAFZZ	4730-01-272-0582	3D6E9	2297-N-5630	. . SEAL,CONICAL,FLARED UOC: ZAA,ZAB,ZAC,ZAD,ZAE,ZAF, ZAG,ZAH,ZAJ,ZAL	1
12	PAFZZ	4730-01-271-7978	78500	A-2206-V-1010	. . TEE,TUBE UOC: ZAA,ZAB,ZAC,ZAD,ZAE,ZAF, ZAG,ZAH,ZAJ,ZAL	1



R0333DAA

Figure 316. Rear Wheel Hub and Drum Assembly (M939A2)

(1) ITEM NO.	(2) SMR CODE	(3) NSN	(4) CAGEC	(5) PART NUMBER	(6) DESCRIPTION AND USABLE ON CODE (UOC)	(7) QTY
GROUP 1311 WHEEL ASSEMBLY.						
FIG. 316. REAR WHEEL HUB AND DRUM ASSEMBLY (M939A2)						
1	PAFZZ	5331-01-292-9575	3D6E9	3780-Q-381	O-RING UOC: ZAA,ZAB,ZAC,ZAD,ZAE,ZAF, ZAG,ZAH,ZAJ,ZAL	2
2	PAFZZ	4730-01-318-2821	3D6E9	A-2206-Y-1013	ELBOW,HOSE TO BOSS UOC: ZAA,ZAB,ZAC,ZAD,ZAE,ZAF, ZAG,ZAH,ZAJ,ZAL	2
3	PAFZZ	4710-01-271-7939	3D6E9	2296-N-1002	TUBE,METALLIC UOC: ZAA,ZAB,ZAC,ZAD,ZAE,ZAF, ZAG,ZAH,ZAJ,ZAL	2
4	PAFZZ	5310-01-271-5872	78500	1227-X-1350	NUT,SLEEVE UOC: ZAA,ZAB,ZAC,ZAD,ZAE,ZAF, ZAG,ZAH,ZAJ,ZAL	2
5	PAFZZ	5306-01-281-2333	78500	1199-A-3927	BOLT,U UOC: ZAA,ZAB,ZAC,ZAD,ZAE,ZAF, ZAG,ZAH,ZAJ,ZAL	2
6	PRFZZ		78500	A-3299-C-6139	BRACKET,MOUNTING CHAMBER UOC: ZAA,ZAB,ZAC,ZAD,ZAE,ZAF, ZAG,ZAH,ZAJ,ZAL	8
7	PFFZZ	5310-01-135-3554	06848	2666715-060	WASHER,FLAT UOC: ZAA,ZAB,ZAC,ZAD,ZAE,ZAF, ZAG,ZAH,ZAJ,ZAL	4
8	PAFZZ	5310-01-126-0566	78500	NL25Z1	NUT UOC: ZAA,ZAB,ZAC,ZAD,ZAE,ZAF, ZAG,ZAH,ZAJ,ZAL	4
9	PAFZZ	5330-01-271-9410	01212	4591SCR	SEAL,PLAIN ENCASED UOC: ZAA,ZAB,ZAC,ZAD,ZAE,ZAF, ZAG,ZAH,ZAJ,ZAL	2
10	PAFZZ	3110-00-950-9700	60038	594A	CONE AND ROLLERS,TA UOC: ZAA,ZAB,ZAC,ZAD,ZAE,ZAF, ZAG,ZAH,ZAJ,ZAL	2
11	PAFZZ	2530-01-284-2311	78500	A2-333-Z-3536	HUB,WHEEL,VEHICULAR ASSEMBLY,RIGHT HAND UOC: ZAA,ZAB,ZAC,ZAD,ZAE,ZAF, ZAG,ZAH,ZAJ,ZAL	1
11	PAFZZ	2530-01-283-9694	78500	A1-333-Z-3536	HUB,WHEEL,VEHICULAR ASSEMBLY,LEFT HAND UOC: ZAA,ZAB,ZAC,ZAD,ZAE,ZAF, ZAG,ZAH,ZAJ,ZAL	1
12	PAFZZ	2530-01-271-8023	78500	3219S4829	. BRAKE DRUM UOC: ZAA,ZAB,ZAC,ZAD,ZAE,ZAF, ZAG,ZAH,ZAJ,ZAL	1
13	XAFZZ		78500	A1-333-Z-3536XA	. HUB,WHEEL,VEHICULAR UOC: ZAA,ZAB,ZAC,ZAD,ZAE,ZAF, ZAG,ZAH,ZAJ,ZAL	1

(1) ITEM NO.	(2) SMR CODE	(3) NSN	(4) CAGEC	(5) PART NUMBER	(6) DESCRIPTION AND USABLE ON CODE (UOC)	(7) QTY
14	PAFZZ	3110-00-142-4390	51588	592A	. . CUP,TAPERED ROLLER UOC: ZAA,ZAB,ZAC,ZAD,ZAE,ZAF, ZAG,ZAH,ZAJ,ZAL	2
15	PAFZZ	5325-01-248-1594	80756	RRN-475	. . RING,RETAINGING UOC: ZAA,ZAB,ZAC,ZAD,ZAE,ZAF, ZAG,ZAH,ZAJ,ZAL	1
16	PAFZZ	5330-01-308-0175	3D6E9	A-1205-D-2162	. . SEAL,PLAIN ENCASED UOC: ZAA,ZAB,ZAC,ZAD,ZAE,ZAF, ZAG,ZAH,ZAJ,ZAL	1
17	PAFZZ	5330-01-272-1147	01212	357974TA0	. . SEAL,PLAIN ENCASED UOC: ZAA,ZAB,ZAC,ZAD,ZAE,ZAF, ZAG,ZAH,ZAJ,ZAL	1
18	PAFZZ	2530-01-285-3563	78500	3286-P-1056-S	. . DEFLECTOR,DIRT AND UOC: ZAA,ZAB,ZAC,ZAD,ZAE,ZAF, ZAG,ZAH,ZAJ,ZAL	2
19	PAFZZ	3120-01-271-8353	78500	2245-H-1022	. . BUSHING,SLEEVE UOC: ZAA,ZAB,ZAC,ZAD,ZAE,ZAF, ZAG,ZAH,ZAJ,ZAL	1
20	PAFZZ	5306-01-271-5842	78500	20X-1815-Z	. BOLT,RIBBED SHOULDE LEFT HAND UOC: ZAA,ZAB,ZAC,ZAD,ZAE,ZAF, ZAG,ZAH,ZAJ,ZAL	10
20	PAFZZ	5306-01-271-5843	78500	20X-1816-Z	. BOLT,RIBBED SHOULDE RIGHT HAND UOC: ZAA,ZAB,ZAC,ZAD,ZAE,ZAF, ZAG,ZAH,ZAJ,ZAL	10
21	PAFZZ	3110-00-100-0650	60038	598	. CONE AND ROLLERS,TA UOC: ZAA,ZAB,ZAC,ZAD,ZAE,ZAF, ZAG,ZAH,ZAJ,ZAL	2
22	PAFZZ	5310-01-271-2467	78500	1227-D-1356	NUT,PLAIN,OCTAGON UOC: ZAA,ZAB,ZAC,ZAD,ZAE,ZAF, ZAG,ZAH,ZAJ,ZAL	2
23	PAFZZ	5310-00-321-9974	3D6E9	R002304	WASHER,KEY UOC: ZAA,ZAB,ZAC,ZAD,ZAE,ZAF, ZAG,ZAH,ZAJ,ZAL	2
24	PAFZZ	5310-01-270-8425	78500	1227-E-1357	NUT,PLAIN,OCTAGON UOC: ZAA,ZAB,ZAC,ZAD,ZAE,ZAF, ZAG,ZAH,ZAJ,ZAL	2
25	PAFZZ	5310-01-375-3107	3D6E9	1199H112	NUT,PLAIN,HEXAGON WHEEL STUD,R.H. UOC: ZAA,ZAB,ZAC,ZAD,ZAE,ZAF, ZAG,ZAH,ZAL	10
25	PAFZZ	5310-00-273-7771	78500	1199G111	NUT,PLAIN,SINGLE BA WHEEL STUD,L.H. UOC: ZAA,ZAB,ZAC,ZAD,ZAE,ZAF, ZAG,ZAH,ZAL	10

END OF FIGURE